

Aumentum Registry

A comprehensive and scalable solution that easily automates your land records management process



AumentumTM

TECHNOLOGIES

Experienced Team • Trusted Partner • Innovative Solutions



LAND REGISTRY AUTOMATED

Designed by land registration professionals and used across the globe, Aumentum Registry is an off-the-shelf and ready-to-install land registry automation system.

The World's Leading System

Easy to use and configure, Aumentum Registry provides the flexibility you need to automate land records management and facilitate the registration of real estate and property-based transactions. The modular functionality of the system enables you to seamlessly scale up as transaction volumes, staff capacity, and budgets increase.

Best-In-Class-Functionality **Functional Integration**

Part of our government revenue management suite, Aumentum Registry provides an intuitive workflow-driven, enterprise-level platform for handling common registration-related challenges, such as multiple requirements for transaction processes, legislative changes, user access rights, and multiple language needs.

Aumentum Registry can be integrated with other Aumentum products. This provides your staff with the time saving capabilities of enquiry, data mining, reporting, and workflow to track registered properties from creation and registration through the entire land administration and taxation process.

Aumentum Registry Editions



Archive

Offers immediate benefits by creating a digital registry that can be used for subsequent registrations once established. A simple indexing and scanning workflow comes out of the box, but it can be configured for language, attributes, and document types for a particular jurisdiction. The Archive edition is the most effective means to create a digital registry, enabling clients to capture all active instruments registered on a property file.



Estate Management

Provides agencies responsible for lands owned by the state the ability to manage transactions, interests, records, and property details relating to leases, acquisitions, assignments, disposals, rent reviews, lease renewals, valuations, maintenance, and assets.



Land Registration

Provides a full-featured, Torrens-based title registration system for use by state agencies and land registrars around the world. Highly configurable workflows support the necessary reviews and approval stages needed to guarantee an indefeasible Certificate of Title.

Registry Features

Built for Maximum Flexibility

Aumentum helps you easily navigate from screen to screen, interact in workflows, and run reports. It supports robust business features and facilitates legislative updates, and it has been designed to be highly configurable and adaptable, providing you with a wider range of uniform application features and benefits than most custom-built systems – at a lower cost of acquisition and ownership.

Aumentum not only saves you money, but is easier and faster to deploy, helping to reduce the time and project management cycle from installation to operation. This time and cost savings, coupled with Aumentum's flexible service-oriented architecture allows for integration with other government information management systems, resulting in reduced risk for you.



Workflow

Transforms manual or semi-automated business processes into the Registry Workflow Engine. All functions of the land registration and administration process are streamlined and made more efficient. In doing so, the transaction turnaround time is shortened, thereby reducing operational costs.



Reporting

Users can generate reports, forms, and letters in PDF, Microsoft® Office Word, Excel, and HTML. A comprehensive list of reports is pre-loaded, enabling managers and administrators to report on staff productivity and transaction throughput.



Security

Defining access rights and permissions to data is a fundamental feature. As users interact with the data, the system logs and builds full audit trails, increasing transparency and minimizing the opportunity for fraudulent activity.



Record Preservation

Aumentum Registry provides secure storage and redundancy of important records that could be damaged by fingerprints, floods, fires, and other natural disasters.



Integration

An application programming interface (API) provides integration with third-party systems and other existing government applications. It also integrates with Aumentum Cadastre, Aumentum Valuation, and Aumentum Tax to fully maintain cadastral information and automate property valuations, taxation, billing, and collection.



Content Sharing

As information is entered and stored, it is also securely shared between government staff for the automation of business processes. This transforms manual-and paper-based methods into a digital process resulting in secured distribution of data. This results in a more controlled land registration process, while at the same time achieving faster transaction turnaround times and increased throughput.

Registry Modules

Workstation

Used to manage a user's work tasks as land and property transactions are routed through a workflow. The Windows-based user interface is clean and crisp with a transaction queue for easy identification of upcoming tasks, along with flexible built-in query and filter capabilities. Complicated tasks are controlled by the use of wizards that guide users through workflows in a logical and intuitive manner.

Web Access

Permits read-only access to Aumentum Registry information. Both intranet and Internet browser-based versions enable government offices, notaries, banks, and the general public to search, display, and print land and property information. This means banks are able to conduct due diligence ahead of any loan made on the basis of land or property. Access is securely controlled to ensure that the system cannot be fraudulently used.

Administrator

A browser-based console used to configure Aumentum Registry. It comprises tools that manage users and user groups, workflows, and transactions. In addition, Administrator schedules reports and configures dictionaries as well as controls other Aumentum Registry settings such as working and nonworking days.

Cashier

An integrated point-of-sale cashiering module for the collection of fees charged for registration. It is primarily offered as an added module to the Land Registration and Estate Management editions of Aumentum Registry. Cashier is fully configurable, supporting the collection of fees in cash, by credit card, check, or through client accounts.

Extension for ArcGIS

Provides seamless integration between Aumentum Registry and a government's geographic information system (GIS). The Extension establishes a bidirectional link between property records maintained in Aumentum Registry and parcel information maintained in ArcGIS. GIS users can easily retrieve documents and identify land ownership status and land rights all from within ArcGIS Desktop.

GISViewer

Accessible directly from Workstation and Web Access, or from a standalone Internet browser, GISViewer displays a digital map and provides standard map navigation tools as well as spatial and attribute queries to quickly locate parcels associated with land rights. With the GISViewer, users are able to connect titles, leases, licenses, and other land-related transactions with parcel information generated from survey records.

WebClient

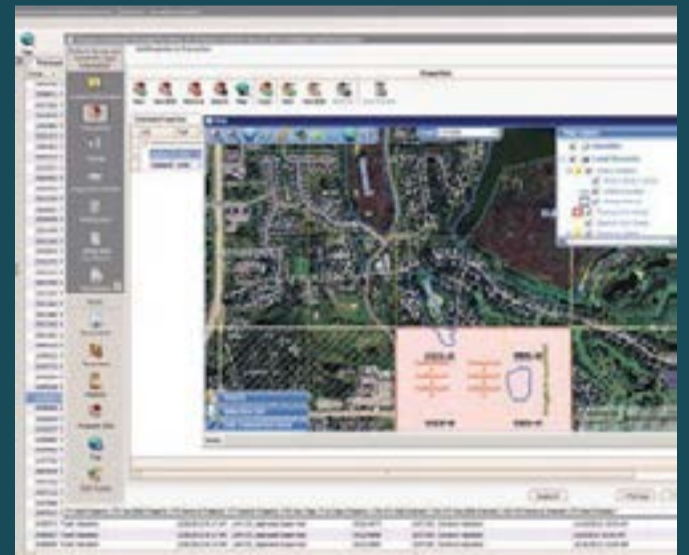
Work tasks like in Workstation but in a browser window. WebClient has expanded workflow functionality and a better user experience. WebClient also allows for signature digitization and the use of biometrics to approve and electronically sign documents.



Workstation



Administrator



GISViewer



WebClient

Developer Tools



Designer

Designer offers end-user programmatic configuration in three areas – Workflow, Data Model, and Reports. This tool provides programmers with the ultimate flexibility – including templates and examples – for in-house ad hoc revisions to Aumentum Registry. Systems administrators can amend the data model to reflect changes in data structures, custom build reports, and add, edit, or delete workflows.

Client SDK

Aumentum Registry Client SDK enables application developers and system integrators to build external applications and access Aumentum Registry interfaces securely and with ease. With the Client SDK, a programmer can define dynamic and static user interface modules as well as create forms, pop-up windows, and sidebar tools that work inside of the Aumentum Registry Workstation module. Client SDK includes documentation and project examples.



Partner with Aumentum Technologies

Aumentum Technologies designs, develops, markets and supports a family of tax, valuation and records management solutions for state, county, city and township governments. For five decades our experienced team has focused on developing and delivering state-of-the-art software to our government customers. Through thousands of installations and deployments around the world, our customers have experienced the benefits of effective property administration, valuation, taxation and document recording for their constituents.



Experienced

We've powered over 1,000 government offices with reliable, innovative solutions. With over 3,000 years of combined experience in collective software development, our staff developed the most in-depth tax solution available today.

We're dedicated to continually improving our products with your feedback. Through our user conferences, ongoing training, and innovation labs, we've heard your feedback about how to make our software work for you.

Innovative

Our team of accomplished professionals develops the highest quality software products on the most modern and scalable technology platform.

We put our expertise to work for our customers across the country to help them better serve their constituents.

aumentumtech.com

Customer Spotlight

Jamaica National Land Agency

Thanks to Aumentum Registry, the time to register a property in Jamaica has been reduced from three weeks to two days. And for the first time ever, land records are also accessible to the public.